

Historical Drill Holes: STD & STE Series
2021-2022 Drill Holes: N Series.
*Historical Drilling was mostly analyzed
only for Copper.*

LiDAR DEM Surface Profile

STD-26

STE-21

63.8m @ 0.31 %Cu, 0.37 %CuEq

159.2m @ 0.22 %Cu, 0.28 %CuEq

18.0m @ 0.17 %Cu, 0.19 %CuEq

292.0m @ 0.31 %Cu, 0.36 %CuEq

24.0m @ 0.24 %Cu, 0.25 %CuEq

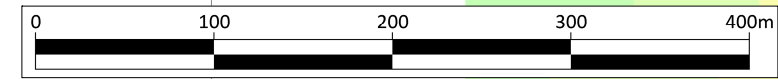
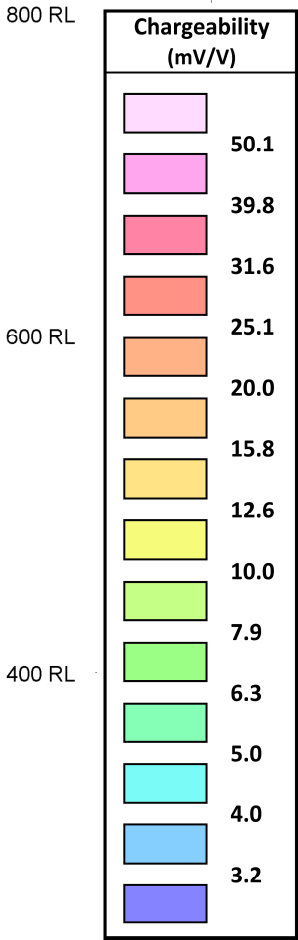
76.0m @ 0.39 %Cu

2009 Gradeshell Model
Cu > 0.30%

N017

N015

N004



PROJECTION : WGS84 Zone 12N

SANTO TOMAS PROJECT

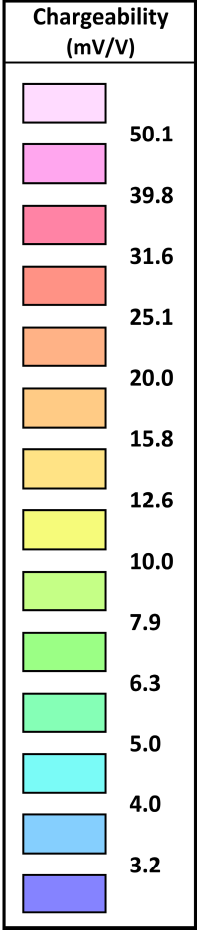
Oroco Resource Corp.

Plate 51: North Zone Cross-Section
Looking Towards N 020° East
Holes N015, N017 Cu and CuEQ

Section Alignment Line

Historical Drill Holes: STD & STE Series
2021-2022 Drill Holes: N Series.
*Historical Drilling was mostly analyzed
only for Copper.*

LiDAR DEM Surface Profile



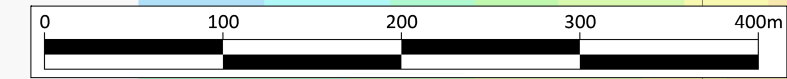
800 RL

600 RL

400 RL

200 RL

0 RL



PROJECTION : WGS84 Zone 12N

SANTO TOMAS PROJECT

Oroco Resource Corp.

Plate 55: North Zone Cross-Section

Looking Towards N 020° East

Holes N008, N018 Cu and CuEq

800 RL

600 RL

400 RL

200 RL

0 RL

-200 RL

Section Alignment Line

778000 E

2977500 N

778500 E

779000 E

2977500 N

778500 E

779000 E

229.3m @ 0.50 %Cu

18.0m @ 0.28 %Cu

34.0m @ 0.54 %Cu

26.0m @ 0.31 %Cu

50.0m @ 0.16 %Cu

328.3m @ 0.38 %Cu, 0.45 %CuEq

17.1m @ 0.21 %Cu, 0.23 CuEq

23.3m @ 0.37 %Cu, 0.46 CuEq

63.7m @ 0.38 %Cu, 0.44 CuEq

21.0m @ 0.36 %Cu, 0.42 %CuEq

10.0m @ 0.65 %Cu, 0.68 %CuEq

42.3m @ 0.33 %Cu, 0.38 %CuEq

13.0m @ 0.19 %Cu, 0.25 %CuEq

38.0m @ 0.17 %Cu, 0.20 %CuEq

16.0m @ 0.12 %Cu, 0.13 %CuEq

16.0m @ 0.15 %Cu, 0.16 %CuEq

17.0m @ 0.13 %Cu, 0.14 %CuEq

76.2m @ 0.41 %Cu

STD-23

STD-02

STE-17

STE-51

281.2m @ 0.40 %Cu

34.0m @ 0.18 %Cu, 0.20 %CuEq

20.0m @ 0.25 %Cu, 0.27 %CuEq

2009 Gradeshell Model
Cu > 0.30%

N004

N018

N008

