



TSX-V: OCO

Frankfurt: OR6

www.orocoresourcecorp.com

DISCLAIMER

Some of the statements contained herein may be forward-looking statements which involve known and unknown risks and uncertainties. Without limitation, statements regarding potential mineralization and resources, exploration results, and future plans and objectives of the Company are forward looking statements that involve various degrees of risk. The following are important factors that could cause the Company's actual results to differ materially from those expressed or implied by such forward looking statements: changes in the world wide price of mineral commodities, general market conditions, risks inherent in mineral exploration, risks associated with development, construction and mining operations, the uncertainty of future profitability and the uncertainty of access to additional capital.



PROJECT LOCATIONS



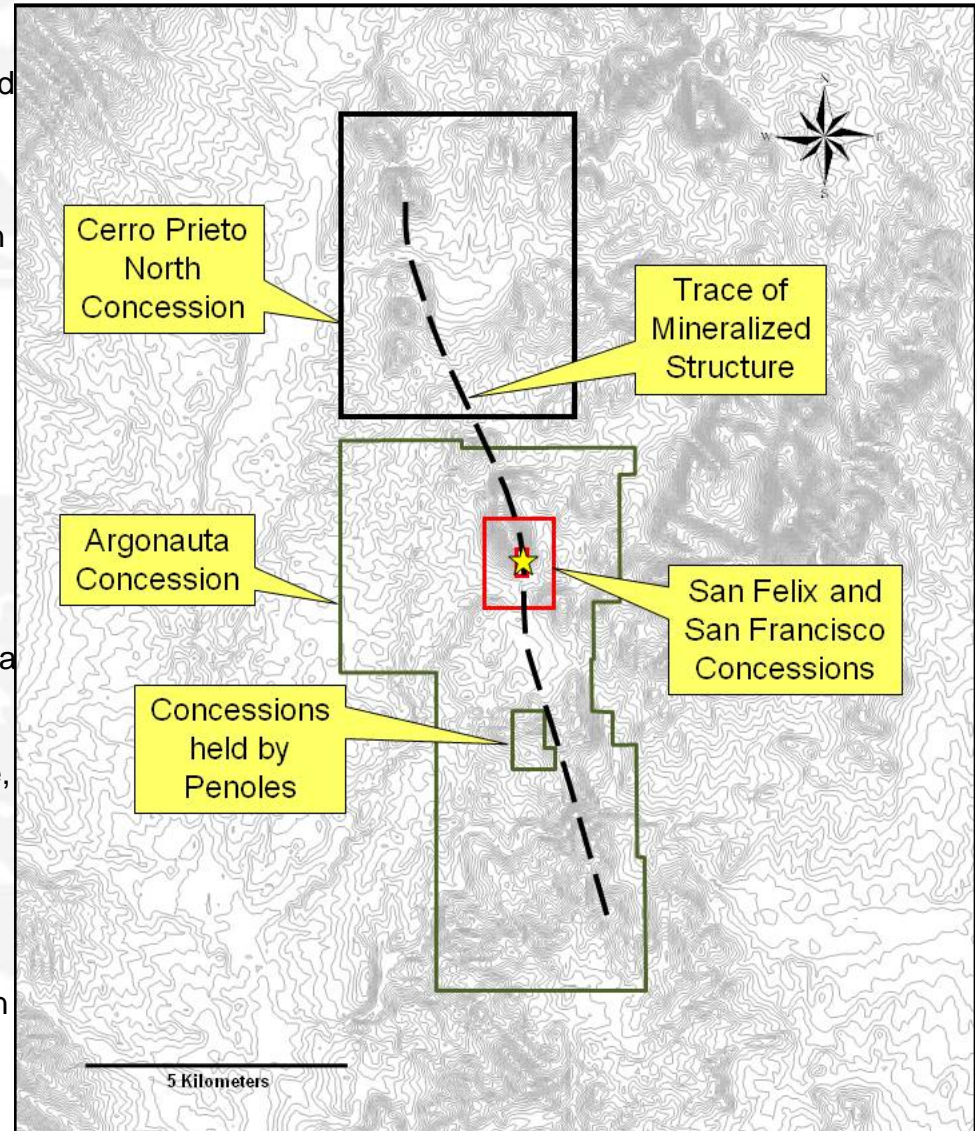
CERRO PRIETO PROJECT HIGHLIGHTS

- Gold resource: 300,000 ounce indicated oxide gold resource with 85% extraction in preliminary leach tests.
- Zinc resource : +500,000,000 pound zinc resource with 85.3% extraction in preliminary leach tests.
- Updated resource to incorporate Phase Two drill program data.
- Recent expansion of landholdings through property option agreement with Yamana Gold Inc. gives Oroco 100% ownership of 7,000 ha of concessions with no additional cash payments.
- Concessions contain 17.5 km of strike length of structure being tested at Cerro Prieto.
- Thickness of zone, topography and grade indicate potential for very low cost initial open pit operation focused on mining the oxide gold resource.
- Premier logistics include water source, paved highway and national power grid within 10 kilometers, and good mining work force within one hour of project.
- Mining friendly Mexico gives the opportunity to put project into production within a short time frame.
- 8,500 meter Phase Two drill program initiated July 2009: Testing 1,500 meters strike length of oxide mineralization, as well as infill drilling in area of indicated resource. 42 holes completed December 2010.
- Phase Two metallurgy studies initiated October 2009.
- Preliminary assessment by an independent mining engineering firm underway.



CERRO PRIETO PROJECT: MINING CONCESSIONS

- 7,000 ha land position containing 17.5 km strike length of mineralized structure
- 215 ha San Felix and San Francisco concessions \$2.5 million purchase price fully paid, concessions 100% owned and subject to a 2% NSR
- 2,507 ha Cerro Prieto North concession 100% owned
- 4,200 ha Argonauta concession option with Yamana Gold. acquisition price, 1 million shares, 1,500 meters of drilling: subject to a 2% NSR
- Located in northern Sonora State, a short distance from US border and the Pan American Highway
- Premier logistics include water source, paved highway and national power grid within less than 10 kilometers. Good mining work force within one hour of project.





NI 43-101 COMPLIANT 7.5 MILLION TONNE INDICATED GOLD RESOURCE USING 0.5 G/T Au CUT OFF *

| CATEGORY | CUT-OFF (g/t Au) | TONNES | Au (g/t) | Ag (g/t) | Pb (%) | Zn (%) |
|-----------|------------------|-----------|----------|----------|--------|--------|
| INDICATED | 0.5 | 7,450,000 | 1.24 | 12.8 | 0.41 | 1.04 |
| INFERRED | 0.5 | 140,000 | 0.99 | 11.2 | 0.73 | 1.98 |

CONTAINED METAL IN 0.5 G/T GOLD CUTOFF RESOURCE *

| CATEGORY | TONNES | GOLD (OUNCES) | SILVER (OUNCES) | LEAD (POUNDS) | ZINC (POUNDS) |
|-----------|-----------|---------------|-----------------|---------------|---------------|
| INDICATED | 7,480,000 | 297,000 | 3,066,000 | 67,321,200 | 170,766,000 |
| INFERRED | 140,000 | 4,500 | 50,400 | 2,252,500 | 6,109,500 |

* Incorporates only Phase One drill program data





**NI 43-101 COMPLIANT 20.4 MILLION TONNE INDICATED
RESOURCE USING 0.5% ZINC CUT-OFF ***

| CATEGORY | CUT OFF (% Zn) | TONNES | Au (g/t) | Ag (g/t) | Pb (%) | Zn (%) |
|-----------|-------------------|------------|-------------|-------------|-----------|-----------|
| INDICATED | 0.5 | 20,440,000 | 0.43 | 8.7 | 0.38 | 1.2 |
| INFERRED | 0.5 | 6,290,000 | 0.13 | 14.5 | 0.3 | 1.04 |

CONTAINED METAL IN 0.5% ZINC CUT-OFF RESOURCE *

| Category | Tonnes | Gold (ounces) | Silver (ounces) | Zinc (Million lbs) |
|-----------|------------|---------------|-----------------|--------------------|
| Indicated | 20,440,000 | 282,600 | 5,717,400 | 540,597,100 |
| Inferred | 6,290,000 | 26,300 | 2,932,000 | 144,176,900 |

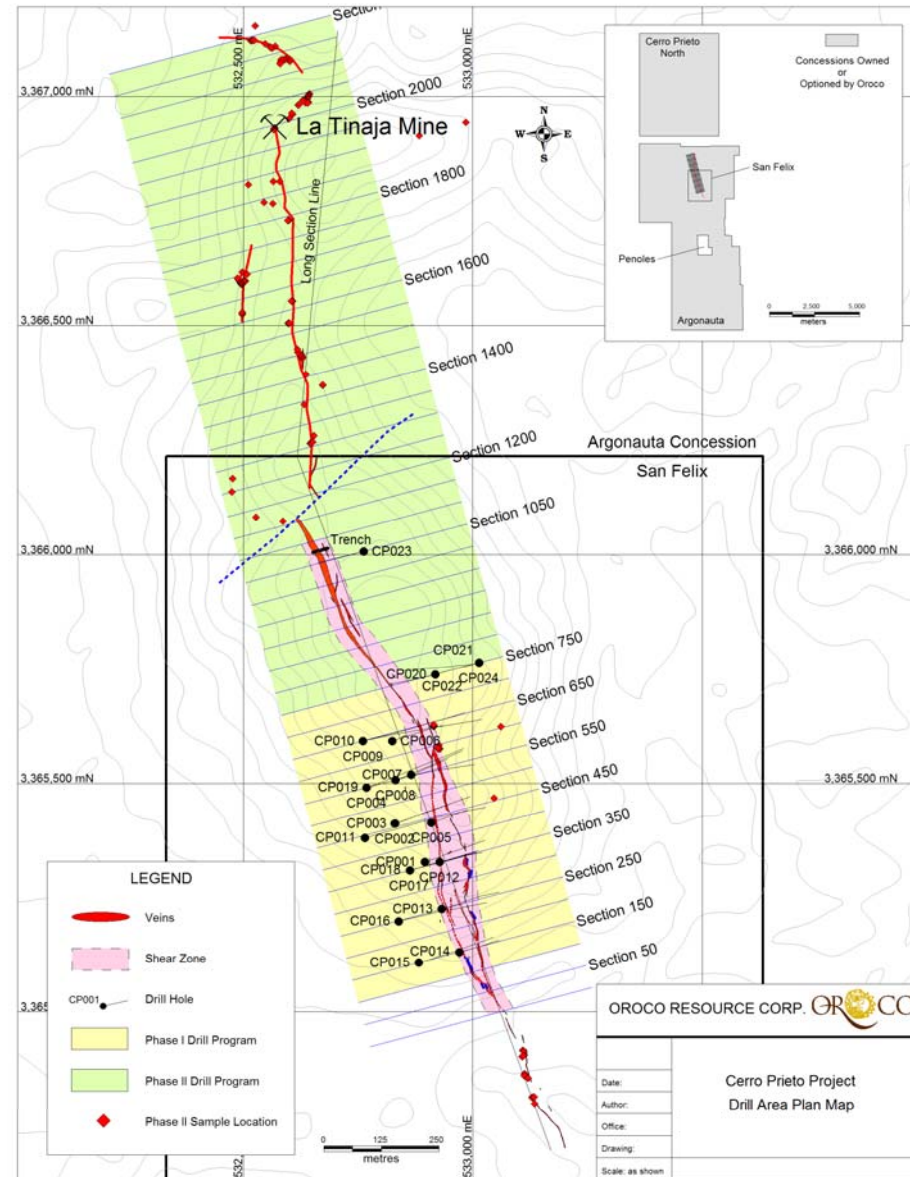
* Incorporates only Phase One drill program data



CERRO PRIETO PROJECT: PHASE ONE

PHASE ONE: 2008

- 6,000 meters (22 holes) diamond drilling over 900 meter strike length completed in Phase One during 2008
- Every hole drilled hit the mineralized target, data from 21 holes, drilled at 100 meter centers, covering 600 meters of strike length, incorporated into a NI 43-101 indicated resource
- Trenching and 300 meter step out hole (CP023) established continuity of mineralization along 1,250 meter strike length
- Mineralization remains open on strike north and south and to depth
- Mineralized structure continues on Yamana Option concession and Cerro Prieto North concession



CERRO PRIETO PROJECT: PHASE ONE and TWO DRILL HIGHLIGHTS

| | from (m) | to (m) | length (m) | tt (m) | au g/t | ag g/t |
|---------------|-------------|-----------|---------------|--------------|-------------|---------------|
| CP001 | 54.90 | 152.00 | 97.10 | 53.50 | 0.64 | 4.90 |
| incl | 137.00 | 152.00 | 15.00 | 8.30 | 2.45 | 3.20 |
| CP002 | 169.20 | 256.20 | 87.00 | 47.00 | 0.11 | 50.80 |
| incl. | 220.60 | 231.80 | 11.20 | 7.00 | 0.21 | 361.80 |
| CP003 | 145.00 | 202.50 | 57.50 | 33.75 | 0.99 | 14.90 |
| incl | 194.50 | 202.50 | 8.00 | 4.70 | 6.05 | 7.80 |
| CP005 | 7.00 | 88.50 | 81.50 | 39.53 | 1.16 | 12.00 |
| CP007 | 84.50 | 114.30 | 29.80 | 22.50 | 1.14 | 52.90 |
| CP014 | 21.40 | 85.40 | 64.00 | 31.00 | 1.01 | 13.70 |
| | 73.2 | 85.4 | 12.2 | 5.9 | 4.53 | 22.3 |
| CP023 | 103.00 | 116.00 | 13.00 | 8.70 | 2.80 | 51.50 |
| CP029* | 187.00 | 194.00 | 7.00 | 7.00 | 1.46 | 2.50 |
| CP031* | 204.00 | 240.00 | 36.00 | 31.00 | 1.28 | 2.30 |
| CP053* | 52.5 | 63.5 | 11 | 11 | 1.76 | 19.7 |
| incl. | 57 | 62.3 | 5.3 | 5.3 | 3.26 | 17.4 |
| also | 81 | 103.5 | 22.5 | 22.5 | 4.36 | 65.6 |
| incl. | 85.5 | 90 | 4.5 | 4.5 | 3.78 | 4.1 |
| and | 94.5 | 103.5 | 9 | 9 | 8.62 | 155.8 |

*From Phase Two Drill Program

Continued on next page..



CERRO PRIETO PROJECT: PHASE ONE and TWO DRILL HIGHLIGHTS

| | from (m) | to (m) | length (m) | tt (m) | au g/t | ag g/t |
|---------------|-------------|-----------|---------------|-------------|--------------|--------------|
| CP055* | 59 | 87.5 | 28.5 | 28.5 | 0.91 | 14.3 |
| incl. | 59 | 65.1 | 6.1 | 6.1 | 1.56 | 25.1 |
| and | 81.2 | 87.5 | 6.3 | 6.3 | 2.08 | 8.1 |
| CP058* | 18.5 | 33.5 | 15.0 | 15.0 | 1.450 | 78.8 |
| and | 41.0 | 64.2 | 23.2 | 23.2 | 1.470 | 9.5 |
| incl. | 53.0 | 64.2 | 11.2 | 11.2 | 2.260 | 13.7 |
| CP060* | 62.0 | 82.0 | 20.0 | 20.0 | 1.030 | 5.3 |
| | 97.5 | 111.0 | 13.5 | 13.5 | 1.510 | 9.9 |
| CP061* | 22.5 | 27.0 | 4.5 | 4.5 | 2.290 | 3.5 |
| | 42.0 | 52.5 | 10.5 | 10.5 | 1.020 | 33.5 |
| CP062* | 4.5 | 9 | 4.5 | 2.5 | 0.76 | 3.8 |
| | 21 | 45 | 24 | 13.5 | 1.75 | 6.1 |
| CP063* | 65.6 | 88.5 | 22.9 | 14 | 1.82 | 3.3 |
| incl. | 71 | 81.5 | 10.5 | 6.4 | 3.18 | 3.4 |
| CP064* | 31.0 | 59.0 | 28.0 | 26.0 | 2.960 | 5.7 |
| incl. | 31.0 | 34.5 | 3.5 | 3.3 | 7.800 | 12.6 |
| CP065* | 32.4 | 57.5 | 25.1 | 19.0 | 2.990 | 18.1 |
| incl. | 39.3 | 50.0 | 10.7 | 8.1 | 6.420 | 40.6 |
| CP066* | 78.0 | 85.0 | 7.0 | 6.7 | 0.160 | 172.4 |
| | 96.5 | 100.5 | 4.0 | 3.8 | 0.980 | 4.4 |

*From Phase Two Drill Program



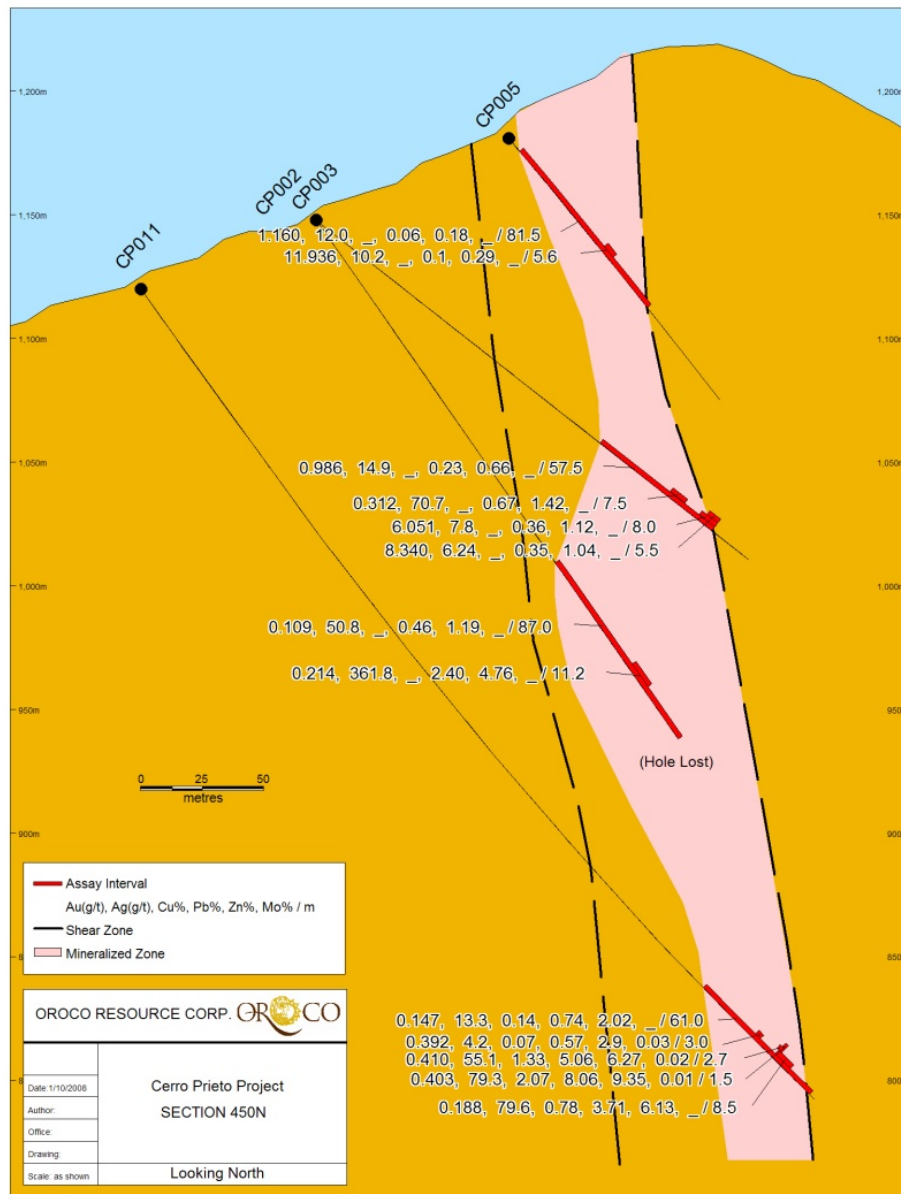
CERRO PRIETO PROJECT



CERRO PRIETO MINE LOOKING NORTH

CERRO PRIETO PROJECT: MINERALIZATION

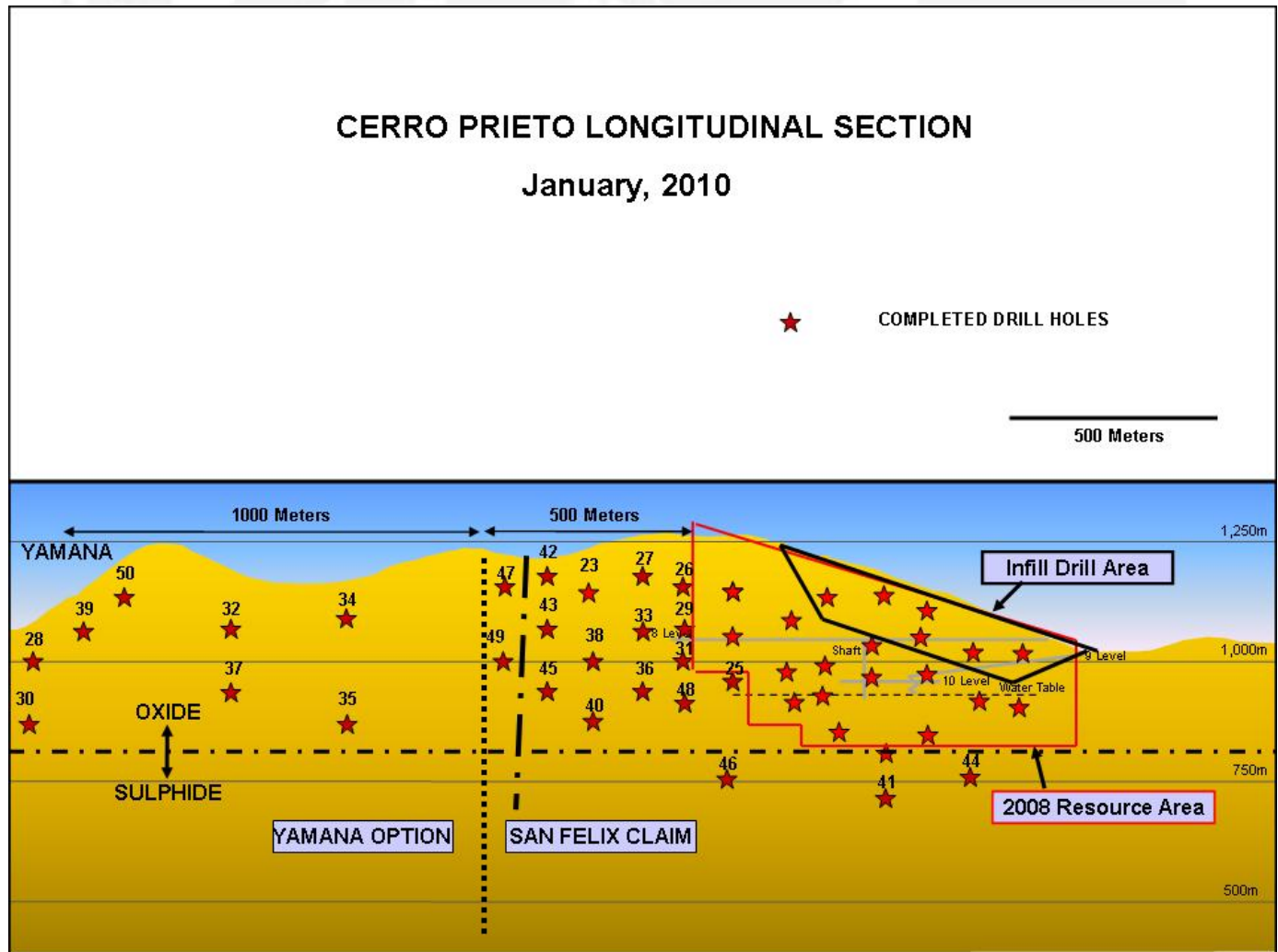
- Subvertical orientation
- Up to 65 meters true thickness
- Oxide to 350 meters from surface where it transitions to sulphide mineralization
- Topographically amenable to open pit mining
- Open on strike to the north and south as well as at depth



CERRO PRIETO PROJECT: 2009 PHASE TWO DRILL PROGRAM

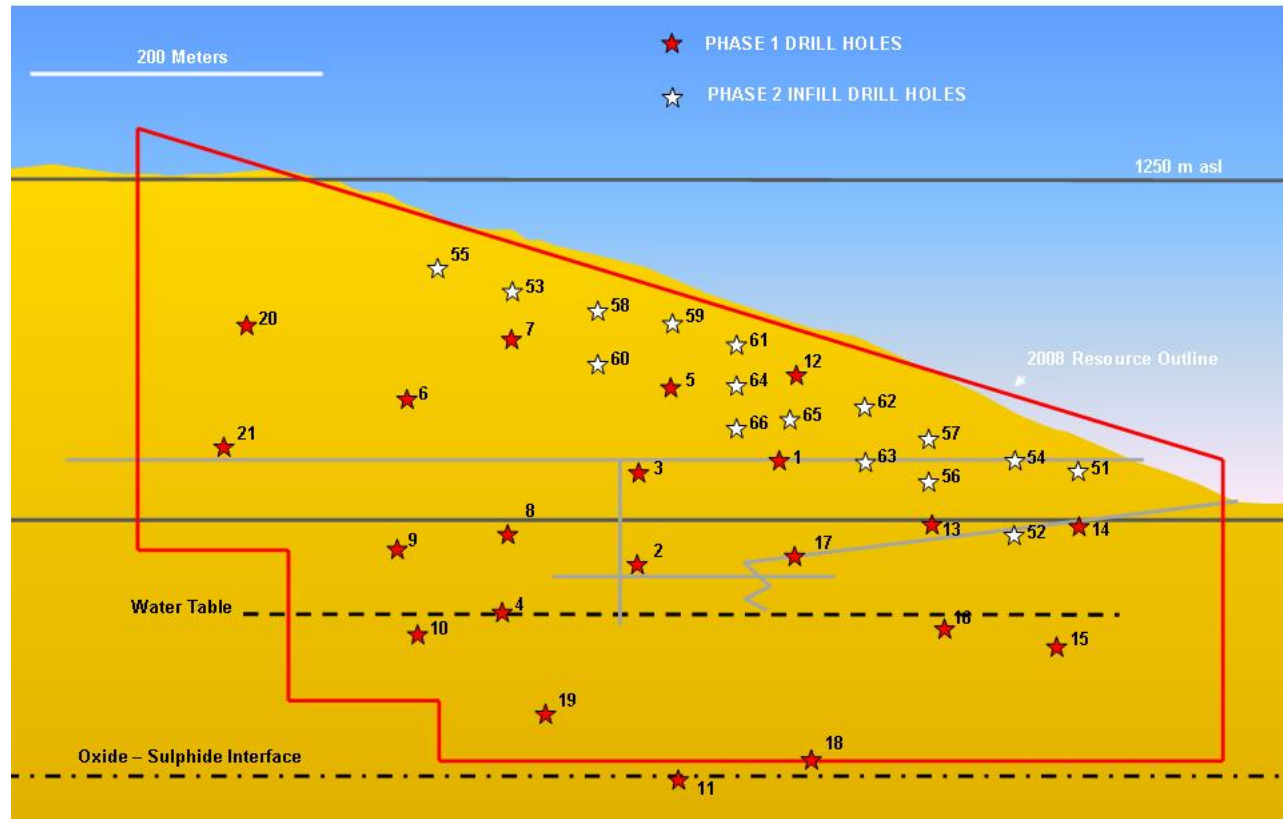
CERRO PRIETO LONGITUDINAL SECTION

January, 2010



CERRO PRIETO PROJECT: 2009 PHASE TWO DRILL PROGRAM

CERRO PRIETO LONGITUDINAL SECTION SHOWING INFILL DRILL HOLE LOCATIONS

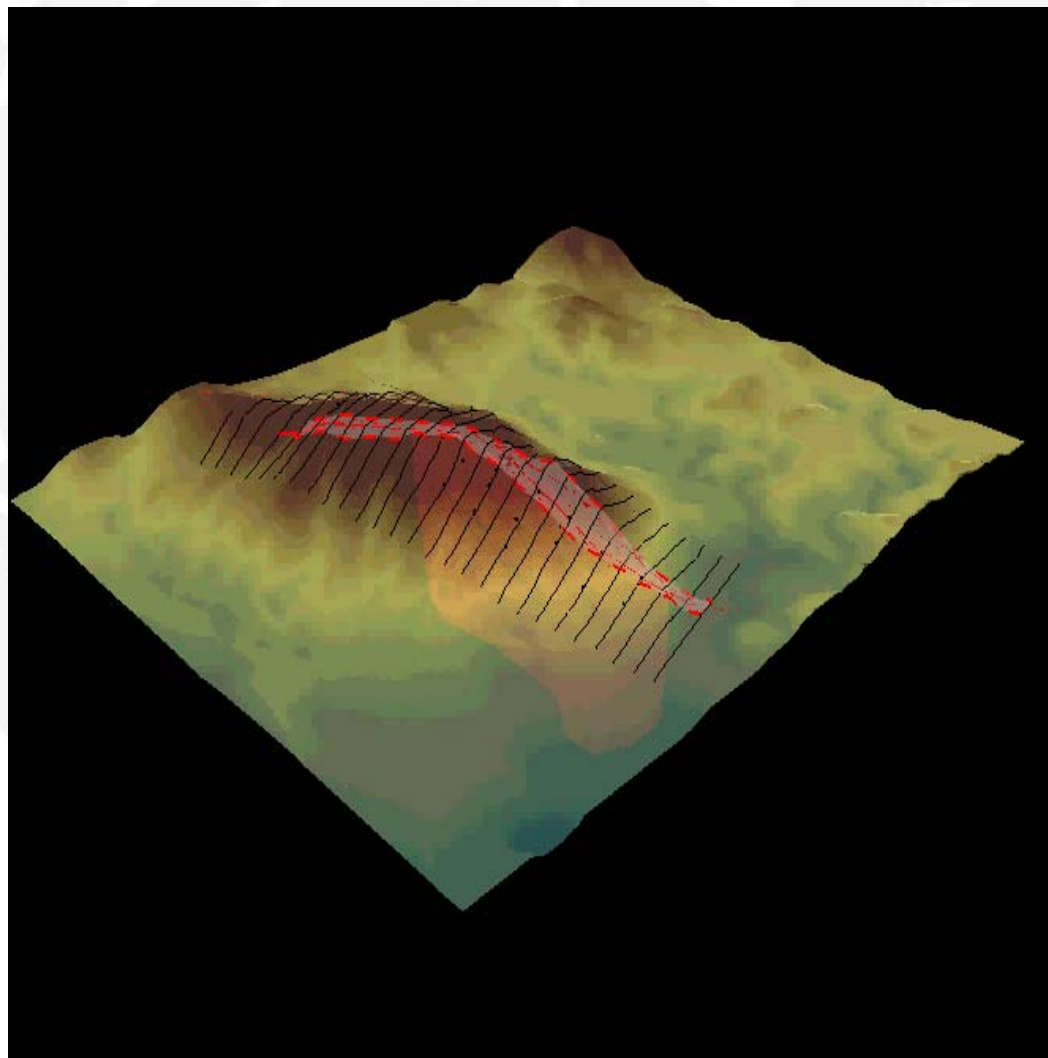


DRILL, DEFINE, MINE: CRITICAL PATH TO MINING

- Jan 2009** Complete resource estimate, begin metallurgical studies
- July 2009** Commence infill and extension drilling
- Oct 2009** Commence pre-feasibility study, phase two metallurgical study and environmental study
- Dec 2009** Complete Phase Two drilling
Complete preliminary environmental studies
- Q1 2010 est. Complete updated resource calculation
- Q2 2010 est. Complete Phase Two metallurgical study
- Q2 2010 est. Complete prefeasibility Study



CERRO PRIETO PROJECT: 3D UNDERGROUND ANIMATION*



* Complete animation available at www.ororesourcecorp.com

CAPITAL STRUCTURE

| | |
|--|------------|
| Shares Issued and Outstanding | 42,077,421 |
| Share Purchase Warrants @ \$0.25: | 6,500,000 |
| Share Purchase Warrants @ \$0.30: | 3,588,350 |
| Share Purchase Warrants @ \$0.40: | 307,200 |
| Share Purchase Options @ \$0.55: | 800,000 |
| Management Incentive Options Outstanding @ \$0.25 and \$0.55: | 2,375,000 |

Listing:

TSX.V:OCO
Frankfurt: OR6



DIRECTORS

Craig Dalziel, President, Director

- Over 25 years of financial, investment and administrative experience
- Facilitated the financing and re-opening of Newfoundland's Rambler Mine
- Led the formation of Southern Arc Minerals Inc., Northern Rand Resource Corp. and Oroco Resource Corp.

Ken Thorsen, Chairman

- Over 40 years of experience in the mining business
- 8 years with Selection Trust; 3 years with Cameco
- 21 years with Teck Corporation and 7 years as a consultant
- Senior Exploration Executive at Teck Cominco including 2 year period as President of Teck Exploration Ltd.

Stephen M. Leahy, Director

- Founder of North American Tungsten
- Over 26 years of experience in venture capital
- Chairman, CEO, Director of North American Tungsten Ltd.

Robert Friesen, Director

- Over 40 years of experience in mining and minerals exploration
- 7 years as Chief Geologist with Noranda Group
- 5 years as a Project Geologist with Teck Exploration Ltd.

Steve Vanry, Director and Chief Financial Officer

- Over 17 years with publicly-traded natural resource companies at both management and board levels
- Focused on strategic planning, fund raising, mergers and acquisitions, regulatory compliance and financial reporting.





TSX-V: OCO

Frankfurt: OR6

www.orocoresourcecorp.com